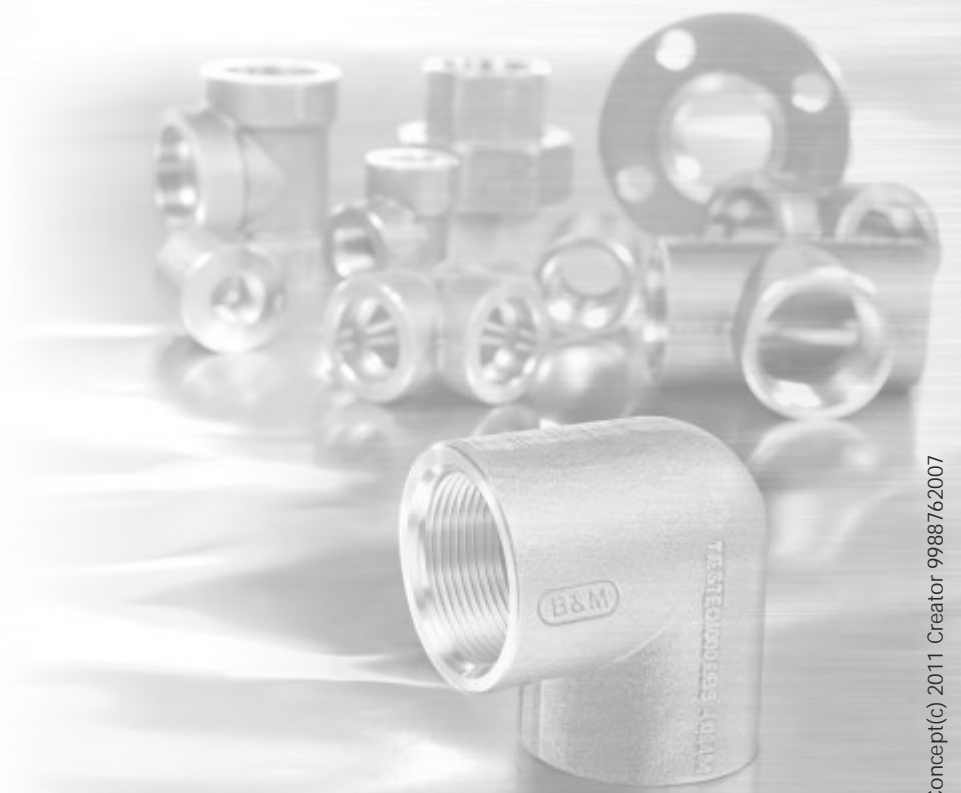




www.bmmeters.com

Manufacturers :
B.M. Meters Pvt. Ltd.
(An ISO 9001 : 2008 Certified Co.)
(India).
Manufacturers-Exporters
B&M Drop Forged Fittings & Flanges
Kranti Water Meters
Kushal Flow Meters



Concept(C) 2011 Creator 9988762007

CATALOGUE

HIGH PRESSURE
DROP FORGED STEEL
PIPE FITTINGS
& FLANGES



Specially Designed for High Pressure Applications.





I N D E X

CONTANTS	
	Page
President's Message1
Director's Message2
Company Profile3-4
Process5-7
Certifications8

1000 Lbs. Threaded	
Elbow - R. Elbow9
Tee - R. Tee10
Socket - R. Socket11
Union - Cross12
Plug - Bushes13
Hex Nipple - R. Hex Nipple14
135° Elbow - Elbow M/F15
Elbow Union M/F - Elbow Union F.16
Tee Union M - Tee Union F17
Union M/F18

3000 Lbs. Threaded	
Elbow Threaded 90° - Elbow Th. 45°20
Tee Threaded - Cross Threaded21
Union Threaded - Plug22

C O N T E N T S

3000 Lbs. Socket Weld	
	Page
Socket Weld Elbow 90°- S.W.E 45°23
Reducing Socket Weld Elbow24
Socket Weld Tee - S.W. Cross25
Reducing Socket Weld Tee26
Socket Weld Socket Full Cpl.- Half Cpl.27
Reducing Socket Weld Socket28
Socket Weld Union29

Drop Forged FLANGES	
Slip on Flange31
Lap Joint Flange32
Blind Flange33
Weld Neck Flange34
Screwed Flange35
Socket Weld Flange36
Flange Attaching System37



It is a moment of pride and privilege for us as we release our 2nd edition of catalogue for the information & reference of all our valued clients and consumers.

Today B.M METERS PRIVATE LTD is recognized as one of the most leading and quality oriented manufactures of Forged Fittings, Forged Flanges, Water Meters and Flow Meters.

It's my pleasure and pride to state that I floated this company with Quality base foundation. At B.M Meters our highly skilled work force not only uses the latest, most promising technologies but they are also consistently encouraged to develop new products, experiment with new processes and think new ideas. Our marketing team is energized by the desire to reach the customer in the most interesting and novel ways. I deem B.M Meters is old in years but quite young in attitude. My good wishes and support have always & will continue to remain with all B&M team members.

I believe that the success of B.M Meters has only been possible because of team-work. However, I would like to take this opportunity to thank all our worthy dealers, customers, suppliers, business associates, bankers and most important our employees for their continued commitment and support. I wish them all the very best for the next years.....

An Institution is a lengthened personality of an individual.

Avinash Sharma
President



It is my great pleasure to reach out to customers & prospective customers through the medium of our latest Catalogue.

At B.M Meters consistent quality and customer satisfaction is the prime motto. Our effort has always been to provide an excellent quality and cost effective products in all diverse fields to our valuable clients. My vision is to attain B&M as first choice in Indian as well as in global market by supplying excellent quality product and in time delivery. Our highly technical, dedicated workforce has helped us to achieve this and satisfy all the needs of our clients. Today, I would like to extend thanks all our to worthy team members, customers and consumers whose valuable suggestions encourage us to become better than what we are.

We are committed to provide World Class Forged Fittings & Forged Flanges at the most competitive cost by continuous upgrading our manufacturing infrastructure through latest technologies.

Nitin Sharma
Director

We offer our B.M Products to our worthy National and International customers, I am pleased to assure that our unit is working with a mission which covers not only earning profit but also customer satisfaction by supplying the of best quality products at the most reasonable rates. I truly believe that we will positively be the recognized industry leader by providing unsurpassed customer service, quality products, innovative technology and business ideas. Our firm determination is to provide true worth to the customers to their entire satisfaction

I also believe that development and quality is like a circle which knows no end and this gives a strong base to my decision for upgrading our company's infrastructure.

Kushal Sharma
Director



COMPANY PROFILE

B.M METERS PRIVATE LTD is India's most leading and quality oriented company engaged in manufacturing and exporting of High Pressure Drop Forged Steel Pipe Fittings, Forged Flanges, Water Meters and Flow Meters. The company was incorporated in the year 1980 in the field of Water Meters under the brand name of '**KRANTI**' and has acquired an established reputation and goodwill in every corner of market for its sturdy construction, international quality and allround performance After be successful in the segment of Water Meters company has diversified into Forged Steel Pipe Fittings and Forged Flanges in the year 1996 and frequently running well under able guidance and leadership of Mr. Avinash Sharma (President) along with his team of young professional directors having extensive and understanding of the trade and customer's needs across the world. Today, the company is accredited with ISO 9001:2008, EEPC, NSIC, Indian Boiler Regulation 1950 (IBR), ISO 4064 and ISI certification.

With the state of art manufacturing facility, presently we have manufacturing forging capacity over 500 MT per month, in-house designing and testing facility and are also in process of adding more lines. We are currently exporting our products to over 15 countries worldwide and our production line confirms to the following standard.....

'B&M' Drop Forged Fittings are conforming to IS:1239 (Part - II), IS 4712; 1984 and ASME B16.11-2009. These fittings are usually made from Steel with accordance to IS:1894:1972, ASTM-A-105 & S.S. 304 respectively and are tested for leakage at an internal hydraulic pressure of up to 1000 Lbs, 3000 Lbs, & 6000 Lbs. These are available in Socket Weld and Screwed/ Threaded forms. All fitting are manufactured with thread connection IS: 554:1985, N.P.T thread and BSPT thread. (as per customer requirement). Our fittings are suitable for Fire Fighting, HAVC, Oil & Gas Industries, Petrochemicals, High Pressure Lines, Railways, Shipping, Steel Plants, Boilers, Steam, Chemicals and other industrial purposes.

some views...

'B&M' Drop Forged Flanges are conforming to ASME B16.15-2009 having range Weld Neck, Screwed/ Threaded, Lap Joint, Blind, Slip On and Socket Weld are available in 15 MM to 300 MM with Class 150 and Class 300. Steel usually we used for the manufacturing of Flanges is ASTM A-105.

'Kranti' Water Meters are Woltman Type (Removable Mechanism) with Magnetic Drive, Flange end and hermetically sealed as per Class B of ISO : 4064 & ISI Marked SPIRAL Water Meters (Bulk Enclosed Type IS:2373) and are available from 50mm to 900 mm. We are also manufacturing 'T' type Strainer (Dirt Box).

Our Flow Meters are Flame proof IP 65/ IP 66, CMRI certified IIA IIB having range Electromagnetic Flow Meters, Turbine Flow Meters, Battery Operated Flow Meters, Oil Flow Meter. Our meters are recommended for Water, Refineries, Petro Chemicals, Sugar Mills, Textile Mills, Paper Mill, ETP plant, Milk Plant, Diesel, Vegetable Oils and other commercial and industrial applications.

Our products are widely marketed and have won wild praise from all over for its achievements & contribution towards developments because we never compromise with the quality. Our Vision is to achieve number one position in Indian as well as in global market and we believe this is achievable by proactive thinking, accurate planning and relentless pursuit of excellence with customer's needs.



Computer Added Designing



Raw material



Spectro Meter



Tensile Testing Machine



Partial View of FORGE SHOP



Trimming



PROCESS

Few Glimpses of our CNC Machine Shop



Few Glimpses of our CNC Machine Shop



Maching Section



View of VMC Machine Shop



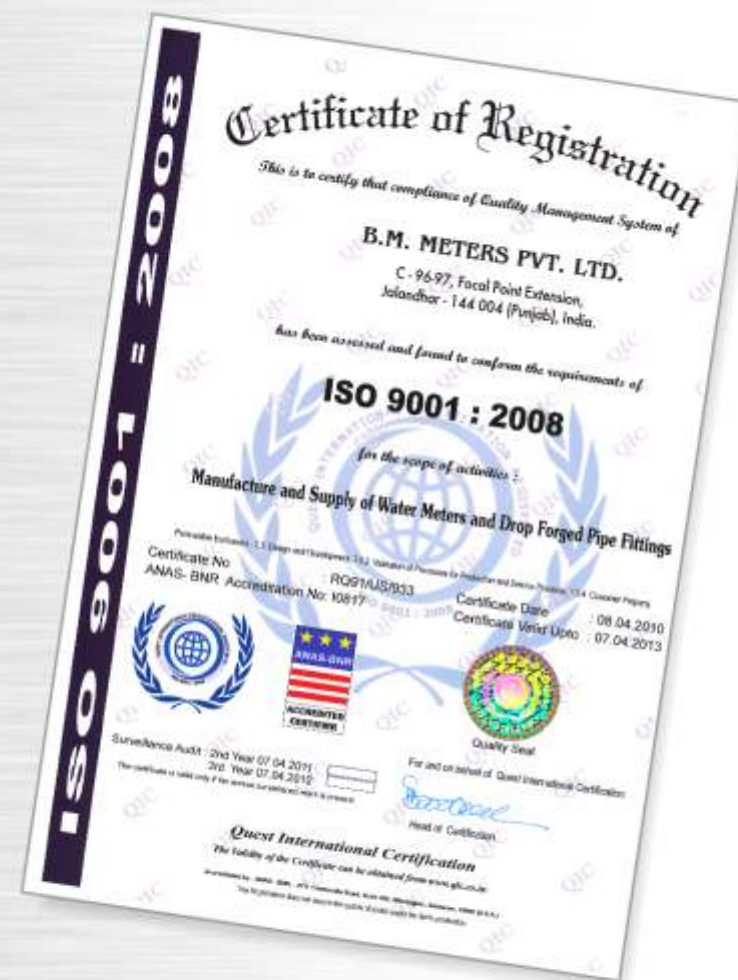
Pressure Hydro Testing



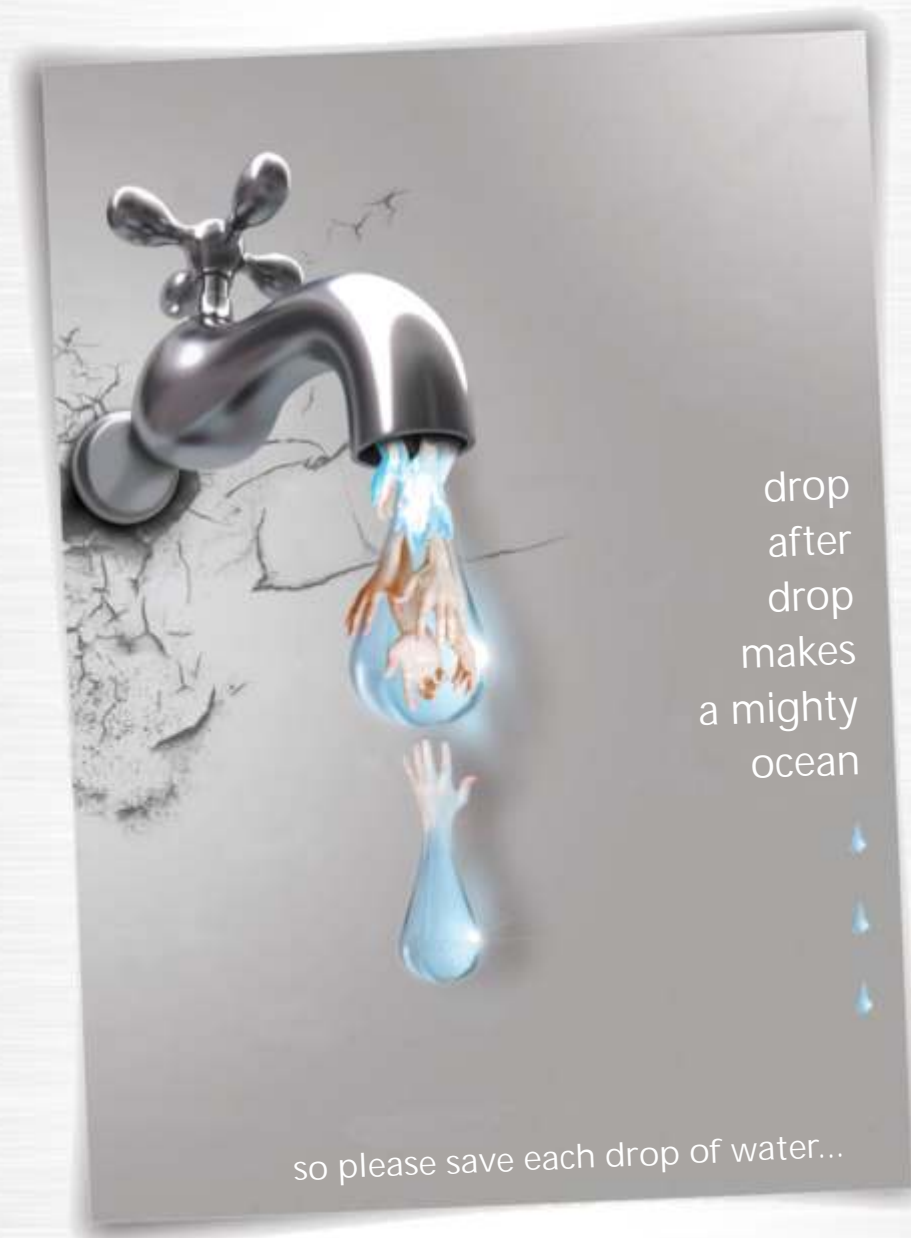
Final Packing for Despatch



CERTIFICATIONS



Save Water... ..Lets start it now



NOTES.



B&M-101



ELBOW

1000 LBS.

90° Female, Equal

- Accurate threading, prefect right angle to 90°.
- Screwed Female end to BSP.
- High quality antirust oil coating.
- Strong, Durable and Total Safety.
- Superior grade forging to ensure crack free installation.



Applications

✓	✓	✓	✓	✓
Water	Air	Steam	Gas	Oil

B&M-102



REDUCING ELBOW

1000 LBS.

90° Female, Reducing

- Accurate threading, prefect right angle to 90°.
- Screwed Female end to BSP.
- High quality antirust oil coating.
- Strong, Durable and Total Safety.
- Superior grade forging to ensure crack free installation.

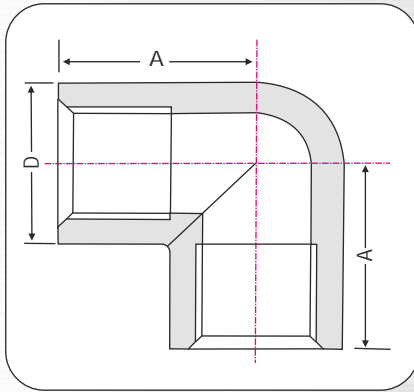


Applications

✓	✓	✓	✓	✓
Water	Air	Steam	Gas	Oil

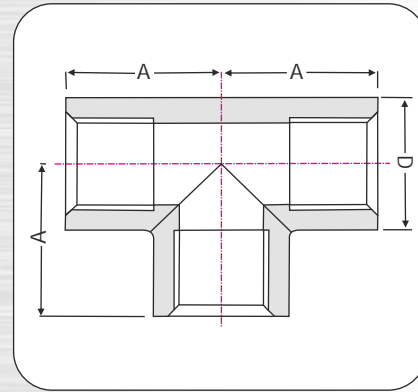
9

ELBOW



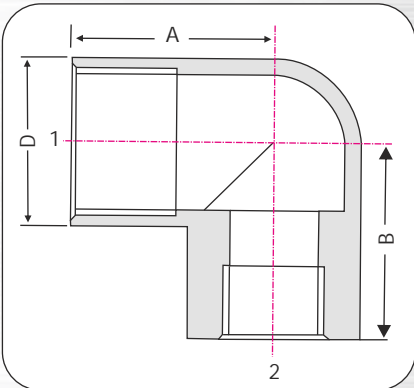
Nominal Size	A (min.)	D
6	16	21.50
8	22	21.50
10	24	25.50
15	32	30
20	35	36.75
25	43	42.50
32	51	52
40	52	59
50	64	75
65	76	91
80	89	104

TEE



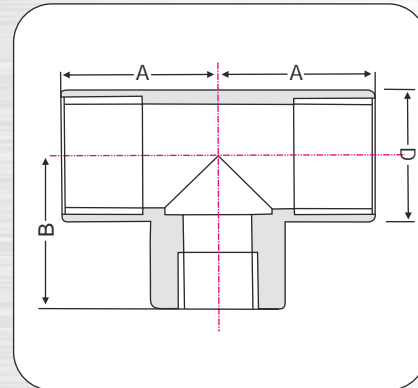
Nominal Size	A (min.)	D
6	16	21.50
8	22	21.50
10	24	25.50
15	32	30.00
20	35	36.75
25	43	42.50
32	51	52.00
40	52	59.00
50	64	75.00
65	76	91.00
80	89	104.00

R. ELBOW



Nominal Size(1x2)	A (min.)	B (min.)	D
8x6	21	22	21.50
10x8	22	24	25.50
15x10	27	32	30.00
20x15	32	35	36.75
25x15	35	43	42.50
25x20	38	43	42.50
32x25	44	51	52.00
40x32	48	52	59.00
50x40	56	64	75.00
65x40	60	76	91.00
65x50	67	76	91.00
80x50	73	89	104.00

R. TEE



Nominal Size(1x2)	A (min.)	B (min.)	D
8x6	21	22	21.50
10x8	22	24	25.50
15x10	27	32	30.00
20x15	32	35	36.75
25x15	35	43	42.50
25x20	38	43	42.50
32x25	44	51	52.00
40x32	49	52	59.00
50x40	56	64	75.00
65x32	57	76	91.00
65x50	67	76	91.00
80x50	73	89	104.00

B&M-103



TEE

1000 LBS.

90° Female, Equal

- Accurate threading, prefect right angle to 90°.
- Screwed Female end to BSP.
- High quality antirust oil coating.
- Superior grade forging to ensure crack free installation.



Applications

✓	✓	✓	✓	✓
Water	Air	Steam	Gas	Oil

B&M-104



REDUCING TEE

1000 LBS.

90° Female, Reducing

- Accurate threading, prefect right angle to 90°.
- Screwed Female end to BSP.
- High quality antirust oil coating.
- Superior grade forging to ensure crack free installation.



Applications

✓	✓	✓	✓	✓
Water	Air	Steam	Gas	Oil

10

B&M-105



SOCKET

1000 LBS.

180° Female, Equal

- Screwed Female threaded ends to BSP and perfect angle to 180°.
- High quality antirust oil coating.
- Strong, Durable and Total Safety
- Superior grade forging to ensure crack free installation



Applications



B&M-106



REDUCING SOCKET

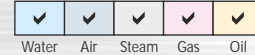
1000 LBS.

180° Female, Reducing

- Screwed Female threaded end to BSP and perfect angle to 180°.
- High quality antirust oil coating.
- Strong, Durable and Total Safety
- Superior grade forging to ensure crack free installation

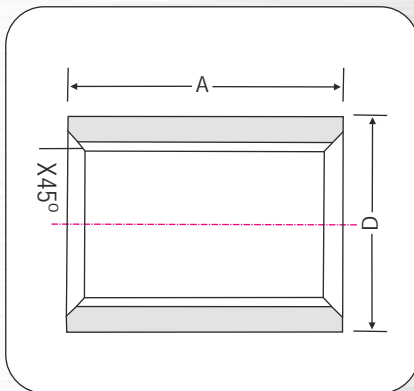


Applications



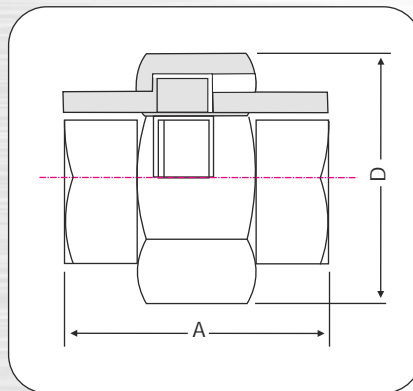
11

SOCKET



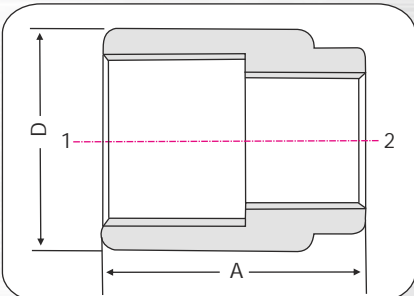
Nominal Size	A (min.)	D (min.)
6	19	15
8	27	18.5
10	28	22
15	37	27
20	39	32.5
25	46	39.5
32	51	49
40	51	56
50	60	68

UNION



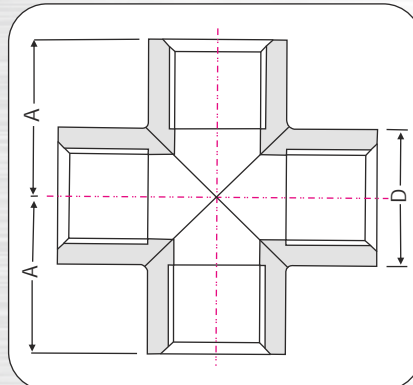
Nominal Size	A (min.)	D
6	38	37
8	44	37
10	51	37
15	57	45
20	67	53
25	76	59
32	85	73
40	100	88
50	110	99
65	120	111
80	135	111

R. SOCKET



Nominal Size(1x2)	A (min.)	D
10x8	29	22
15x8	40	27
15x10	38	27
20x10	43	32.5
20x15	41	32.5
25x15	51	39.5
25x20	49	39.5
32x20	57	49
32x25	56	49
40x20	64	56
40x25	62	56
40x32	60	56
50x20	68	68
50x25	67	68
50x32	65	68
50x40	64	68

CROSS



Nominal Size	A (min.)	D (min.)
6	16	21.50
8	22	21.50
10	24	25.50
15	32	30
20	35	36.75
25	43	42.50
32	51	52
40	52	59
50	64	75

B&M-107



UNION

1000 LBS.

180° Female, Equal

- Screwed Female thread end to BSP & prefect angle to 180°.
- Contain superb Quality Brass Seat to ensure leakage proof & smooth fitment.
- High quality antirust oil coating.
- Strong, Durable and Total Safety
- Superior grade forging to ensure crack free installation.



Applications



B&M-108



CROSS

1000 LBS.

180° Female, Equal

- Accurate threading, length with precise right angle with three sided diversion.
- Screwed Female end to BSP & prefect angled to 180°.
- High quality antirust oil coating.
- Superior grade forging to ensure crack free installation.



Applications



12

B&M-109

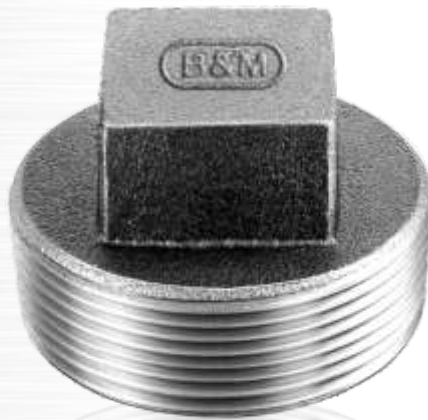


PLUG

1000 LBS.

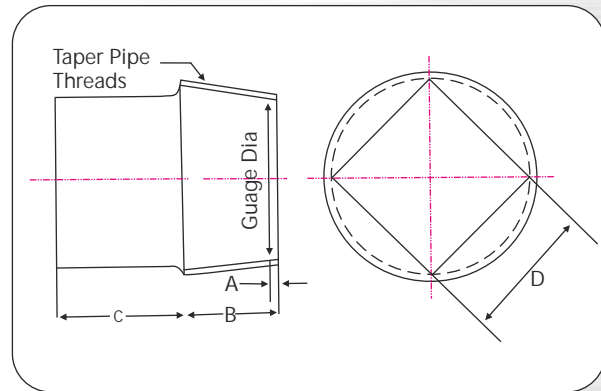
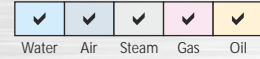
Male Solid

- Accurate BSPT Threading.
- High quality antirust oil coating.
- Superior grade forging to ensure crack free installation
- Strong, Durable and Total Safety



I.B.R
Certified

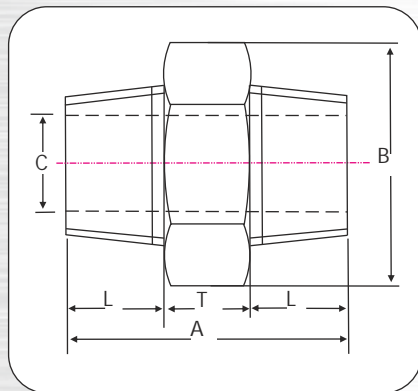
Applications



Nominal Size	A	B	C	D
6	1.8	13	11	7
8	2.8	19	13	10
10	2.8	19	16	13
15	3.6	25	19	14
20	3.6	25	29	17
25	4.6	32	29	21
32	4.6	32	32	27
40	4.6	32	38	32
50	4.6	32	38	37
65	4.6	32	51	48
80	4.6	32	57	54

PLUG

NIPPLE



Nom. Size	A(min.)	B	L(min.)	T
6	25	13.1	9.5	6
8	31	15.5	12.5	6
10	33	17.9	12.5	8
15	43	23.0	17.5	8
20	48	27.8	19	10
25	52	35.3	21	10
32	59	47.2	24	11
40	61	52.0	24	13
50	68	61.1	27	14



HEX. NIPPLE

1000 LBS.

180° Male, Equal

- Accurate Threading & prefect angle to 180°.
- High quality antirust oil coating.
- Strong, Durable and Total Safety.
- Superior grade forging to ensure crack free installation.



I.B.R
Certified

Applications



B&M-111

B&M-110



BUSHES

1000 LBS.

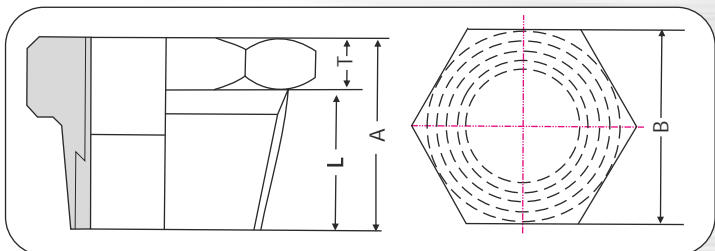
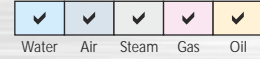
180° Male/Female, Reducing

- Accurate Threading, prefect angle to 180°.
- High quality antirust oil coating.
- Superior grade forging to ensure crack free installation.
- Screwed female end to BSP & male to BSPT.
- Strong, Durable and Total Safety.



I.B.R
Certified

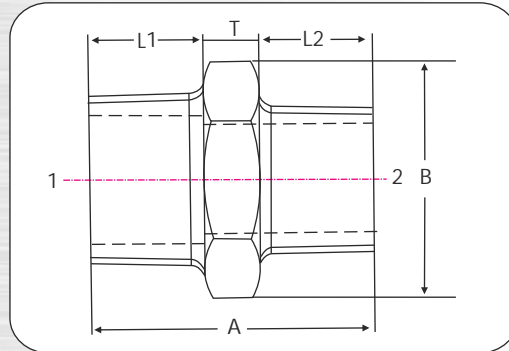
Applications



External Thread	Internal Thread	L(min.)	T(max.)	A(min.)	B
8	6	12.5	6	18.5	15.5
10	8	12.5	7	20.5	17.9
15	8	17.5	8	25.5	23.0
15	10	17.5	7	25.5	23.0
20	10	19	10	29	27.8
20	15	19	10	29	27.8
25	15	21	10	31	35.3
25	20	21	10	31	35.3
32	15	24	11	35	47.2
32	20	24	11	35	47.2
32	25	24	11	35	47.2
40	20	24	13	37	52.0
40	25	24	13	37	52.0
40	32	24	13	37	52.0
50	25	27	14	41	61.1
50	32	27	14	41	61.1
50	40	27	14	41	61.1

BUSHES

R. NIPPLE



Nom. Size(1x2)	A(min.)	B	L1(min.)	L2(min.)	T
8x6	28	15.5	12.5	9.5	6
10x8	33	17.9	12.5	12.5	8
15x8	38	23	17.5	12.5	8
15x10	38	23	17.5	12.5	8
20x10	41.5	27.8	19	12.5	10
20x15	46.5	27.8	19	17.5	10
25x15	48.5	35.3	21	17.5	10
25x20	50	35.3	21	19	10
32x20	54	47.2	24	19	11
32x25	56	47.2	24	21	11
40x25	58	52	24	21	13
40x32	61	52	24	24	13
50x32	65	61	27	24	14
50x40	65	61	27	24	14



REDUCING HEX. NIPPLE

1000 LBS.

180° Female, Reducing

- Accurate Threading & prefect angle to 180°.
- High quality antirust oil coating.
- Strong, Durable and Total Safety.
- Superior grade forging to ensure crack free installation.



I.B.R
Certified

Applications



B&M-112

B&M-113



135° ELBOW

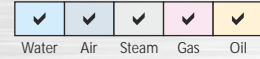
1000 LBS.

135° Female, Equal

- Accurate threading, prefect angle to 135°.
- Screwed Female end to BSP.
- High quality antitrust oil coating.
- Strong, Durable and Total Safety.
- Superior grade forging to ensure crack free installation



Applications



B&M-114



ELBOW M/ F

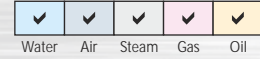
1000 LBS.

90° Male/Female, Equal

- Accurate threading, prefect right angle to 90°.
- Screwed Female end to BSP and Male to BSPT.
- High quality antitrust oil coating.
- Strong, Durable and Total Safety.
- Superior grade forging to ensure crack free installation

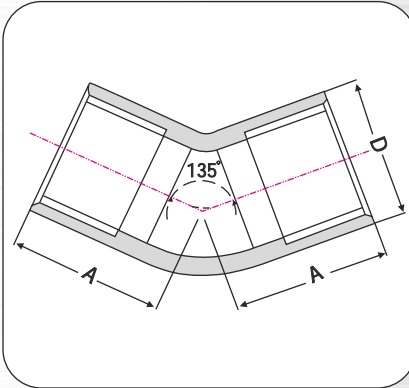


Applications



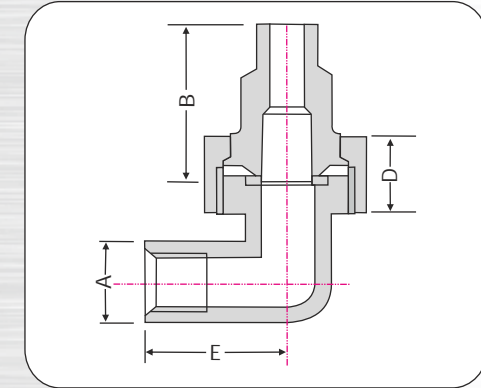
15

1 3 5 ° E L B O W



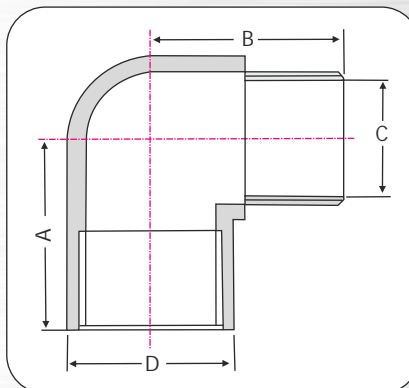
Nominal Size	A (min.)	D
6	16	21.50
8	17	21.50
10	19	25.50
15	22	30
20	27	36.50
25	33	42.50
32	38	52
40	44	59
50	51	75
65	60	84
80	73	98

E L B O W U N I O N



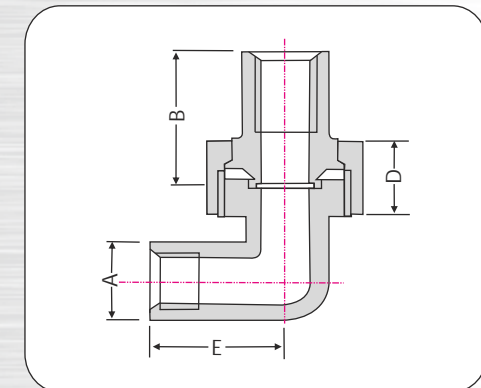
Nom. Size	A	B	D	E
15	30	48.0	20	32
20	37	54.5	22	35
25	42	61.0	25	43
32	53	68.5	27	51
40	61	76.0	30	52
50	77	84.0	35	64

M / F E L B O W



Nominal Size	A (min.)	B (min.)	D
8	19	27	21.50
10	21	29	25.50
15	25	35	30
20	30	40	36.75
25	37	46	42.50
32	43	54	52
40	49	57	59
50	59	70	75

E L B O W U N I O N



Nom. Size	A	B	D	E
15	30	31.0	20	32
20	37	35.5	22	35
25	42	40.0	25	43
32	53	44.5	27	51
40	61	52.0	30	52
50	77	57.0	35	64

B&M-115



ELBOW UNION

1000 LBS.

90° Male/Female, Equal

- Accurate threading, prefect right angle to 90°.
- Screwed Female end to BSP and Male to BSPT.
- High quality antitrust oil coating.
- Superior grade forging to ensure crack free installation.
- Contain superb Quality Brass Seat to ensure leakage proof & smooth fitment.



Applications



B&M-116



ELBOW UNION

1000 LBS.

90° Female, Equal

- Accurate threading, prefect right angle to 90°.
- Screwed Female end to BSP
- High quality antitrust oil coating.
- Contain superb Quality Brass Seat to ensure leakage proof & smooth fitment.
- Superior grade forging to ensure crack free installation.



Applications



16

B&M-117



TEE UNION

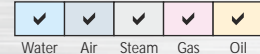
1000 LBS.

90° Male/ Female

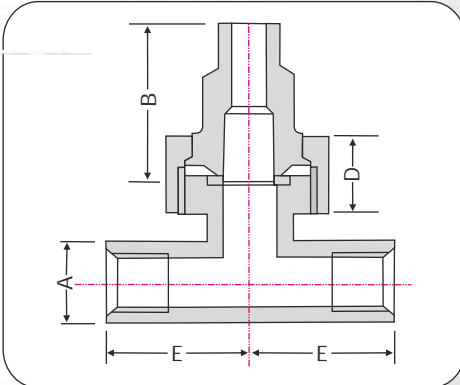
- Accurate threading, prefect right angle to 90°.
- Screwed Female end to BSP and Male to BSPT.
- High quality antirust oil coating.
- Strong, Durable and Total Safety.
- Superior grade forging to ensure crack free installation.
- Contain superb Quality Brass Seat to ensure leakage proof & smooth fitment.

I.B.R
Certified

Applications

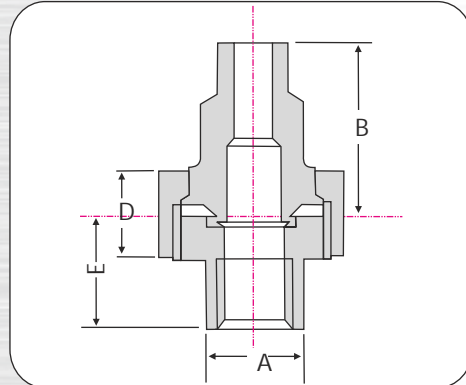


TEE UNION



Nom. Size	A	B	D	E
15	30	48.0	20	32
20	37	54.5	22	35
25	42	61.0	25	43
32	53	68.5	27	51
40	61	76.0	30	52
50	77	84.0	35	64

UNION M/F



Nom. Size	A	B	D	E
15	30	48.0	20	29.0
20	37	54.5	22	33.5
25	42	61.0	25	38.0
32	53	68.5	27	42.5
40	61	76.0	30	50.0
50	77	84.0	35	55.0



UNION M/F

1000 LBS.

180° Male/Female, Equal

- Accurate threading, prefect right angle to 180°.
- Screwed Female end to BSP & male to BSPT.
- High quality antirust oil coating.
- Superior grade forging to ensure crack free installation.
- Contain superb Quality Brass Seat to ensure leakage proof & smooth fitment.

I.B.R
Certified

Applications



B&M-119

B&M-118



TEE UNION

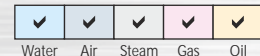
1000 LBS.

90° Female, Equal

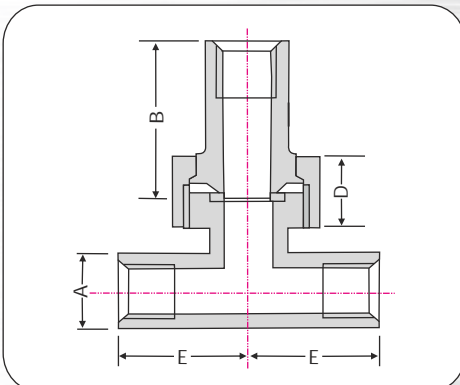
- Full threaded, prefect right angle to 90°.
- Screwed Female end to BSP.
- High quality antirust oil coating.
- Strong, Durable and Total Safety.
- Superior grade forging to ensure crack free installation.
- Contain superb Quality Brass Seat to ensure leakage proof & smooth fitment.

I.B.R
Certified

Applications

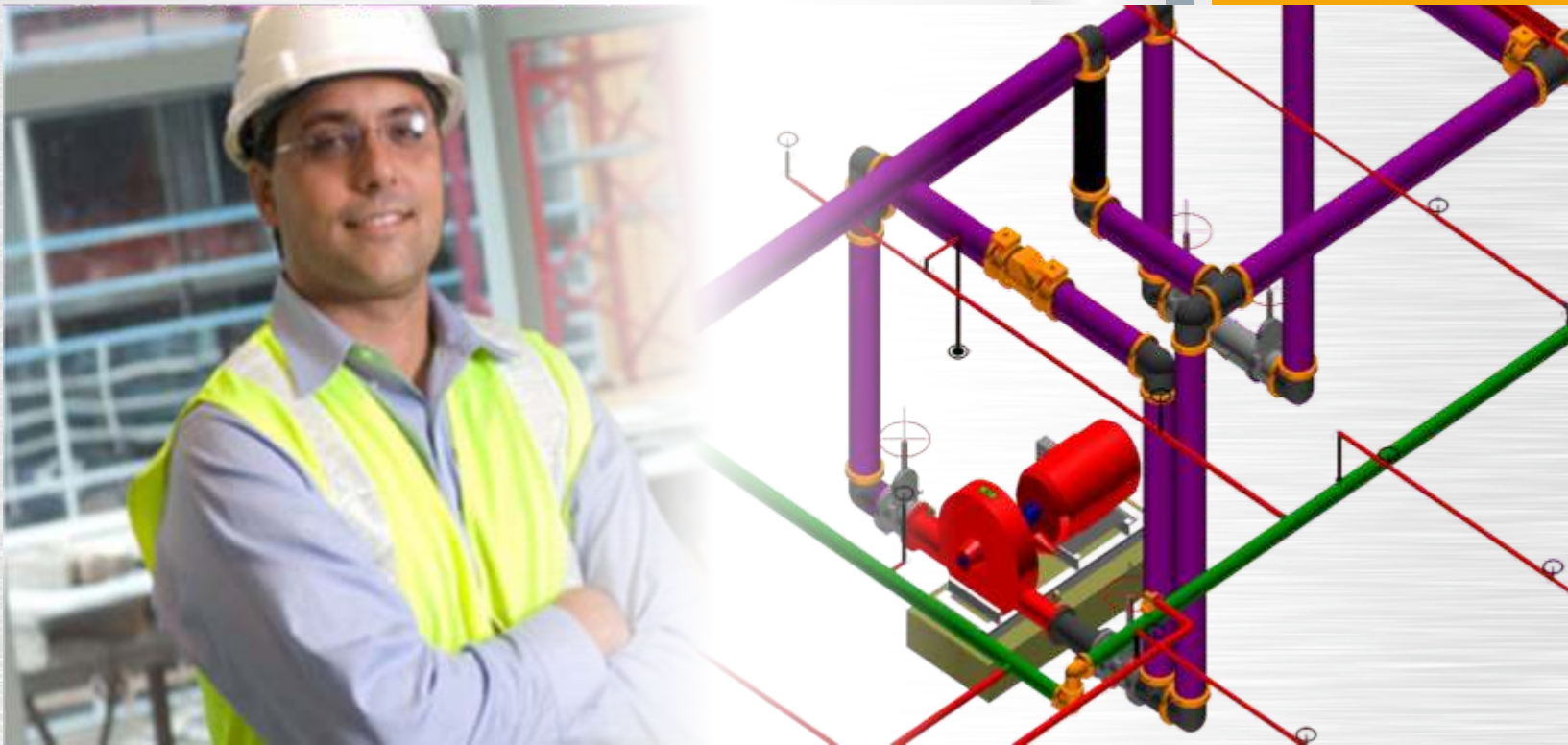


TEE UNION



Nom. Size	A	B	D	E
15	30	31.0	20	32
20	37	35.5	22	35
25	42	40.0	25	43
32	53	44.5	27	51
40	61	52.0	30	52
50	77	57.0	35	64

APPLYING IN FIRE FIGHTING SYSTEM



Most of the Engineers prefer Drop forged Steel Pipe fittings for fire fighting & HVAC applications.



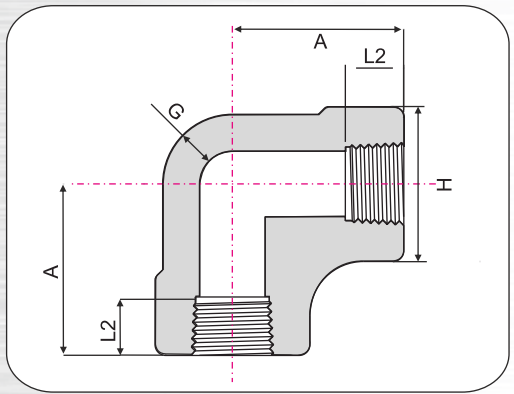
we are here..
where 3000 Lbs and above
pressure is required...



3000 Lbs.



ELBOW THREADED



N. Size	A	H	G	L2
6	21	22	3.18	6.70
8	25	25	3.30	10.20
10	28	33	3.51	10.40
15	33	38	4.09	13.60
20	38	46	4.32	13.90
25	44	56	4.98	17.30
32	51	62	5.28	18.00
40	60	75	5.56	18.40
50	64	84	7.14	19.20
65	83	102	7.65	28.90



ELBOW THREADED
3000 LBS. ASME B16.11
90° Female, Equal

- Accurate threading, perfect right angle to 90°.
- Designed as per ASME Standards.
- High quality antirust oil coating.
- Screwed Female end to BSP.
- Superior grade forging to ensure crack free installation.
- Remarkable Finishing.



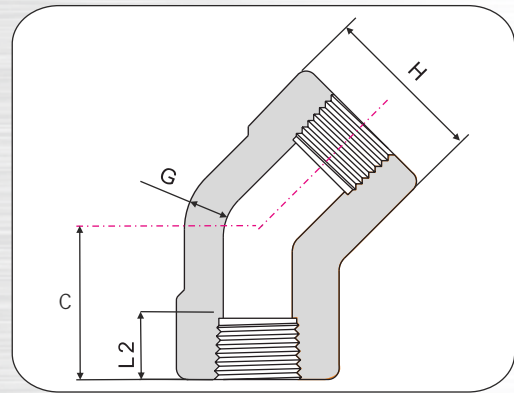
Applications

<input checked="" type="checkbox"/>	<input checked="" type="checkbox"/>	<input checked="" type="checkbox"/>	<input checked="" type="checkbox"/>	<input checked="" type="checkbox"/>	<input checked="" type="checkbox"/>
Water	Air	Steam	Gas	Oil	



B&M-120

135° ELBOW THREADED



N. Size	C	H	G	L2
6	17	22	3.18	6.70
8	19	25	3.30	10.20
10	22	33	3.51	10.40
15	25	38	4.09	13.60
20	28	46	4.32	13.90
25	33	56	4.98	17.30
32	35	62	5.28	18.00
40	43	75	5.56	18.40
50	44	84	7.14	19.20
65	52	102	7.65	28.90



ELBOW THREADED
3000 LBS. ASME B16.11
135° Female, Equal

- Accurate threading, perfect angle to 135°.
- Screwed Female end to BSP.
- High quality antirust oil coating.
- Designed as per ASME Standards.
- Superior grade forging to ensure crack free installation.



Applications

<input checked="" type="checkbox"/>	<input checked="" type="checkbox"/>	<input checked="" type="checkbox"/>	<input checked="" type="checkbox"/>	<input checked="" type="checkbox"/>	<input checked="" type="checkbox"/>
Water	Air	Steam	Gas	Oil	



B&M-121

B&M-122



TEE THREADED

3000 LBS. ASME B16.11
90° Female, Equal

- Accurate threading, perfect right angle to 90°
- Designed as per ASME Standards.
- High quality antirust oil coating.
- Strong, Durable and Total Safety.
- Superior grade forging to ensure crack free installation.
- Screwed Female end to BSP.

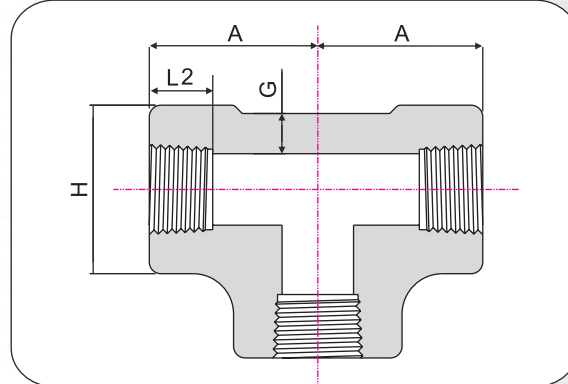


Applications

Water	Air	Steam	Gas	Oil
✓	✓	✓	✓	✓

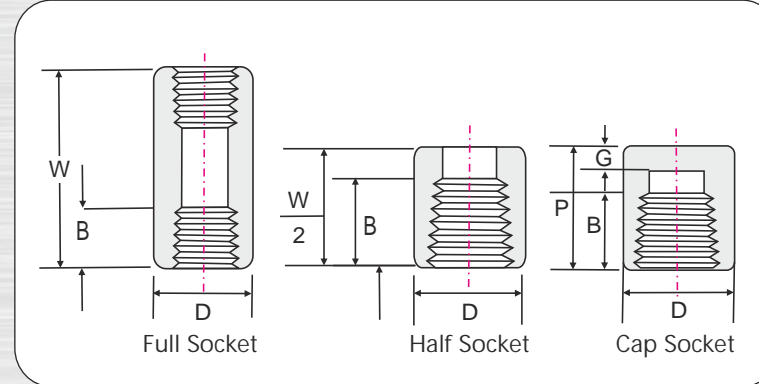


TEE THREADED



Nom. Size	A	H	G	L2
6	21	22	3.18	6.70
8	25	25	3.30	10.20
10	28	33	3.51	10.40
15	33	38	4.09	13.60
20	38	46	4.32	13.90
25	44	56	4.98	17.30
32	51	62	5.28	18.00
40	60	75	5.56	18.40
50	64	84	7.14	19.20
65	83	102	7.65	28.90

SOCKET Full / Half / Cap



Nom. Size	W	P	D	G	B
6	32	19	16	4.8	6.4
8	35	25	19	4.8	8.1
10	38	25	22	4.8	9.1
15	48	32	28	6.4	10.9
20	51	37	35	6.4	12.7
25	60	41	44	9.7	14.7
32	67	44	57	9.7	17.0
40	79	44	64	11.2	17.8
50	86	48	76	12.7	19.0
65	92	60	92	15.7	23.6
80	108	65	108	19.0	25.9
100	121	68	140	22.4	27.7

B&M-124



SOCKET THREADED

3000 LBS. ASME B16.11
180° Female Equal

- Accurate Threading, perfect angle to 180°
- High quality antirust oil coating.
- Superior grade forging to ensure crack free installation
- Strong, Durable and Total Safety



Applications

Water	Air	Steam	Gas	Oil
✓	✓	✓	✓	✓

B&M-123



CROSS THREADED

3000 LBS. ASME B16.11
180° Female, Equal

- Accurate threaded length, precise right angle with three sided diversion.
- Screwed Female end to BSP.
- High quality antirust oil coating.
- Designed as per ASME Standards.
- Superior grade forging to ensure crack free installation.

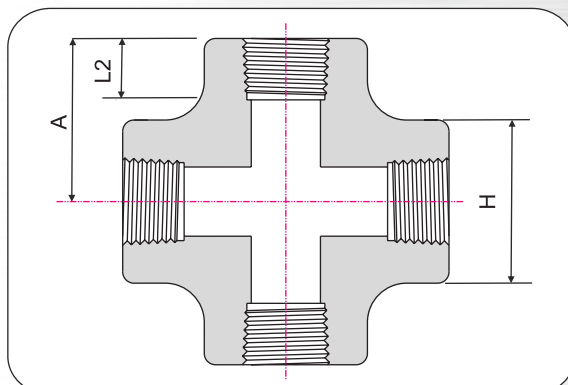


Applications

Water	Air	Steam	Gas	Oil
✓	✓	✓	✓	✓

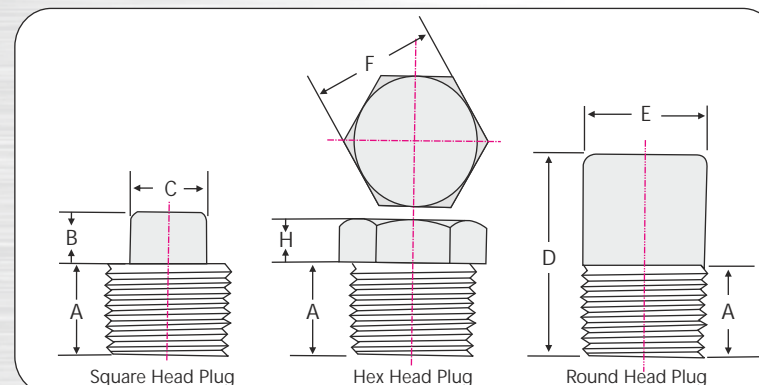


CROSS THREADED



Nominal Size	A	H	L2
6	21	22	6.70
8	25	25	10.20
10	28	33	10.40
15	33	38	13.60
20	38	46	13.90
25	44	56	17.30
32	51	62	18.00
40	60	75	18.40
50	64	84	19.20
65	83	102	28.90

PLUG



		Square Head		Hex. Head		Round Head	
N. Size	A	B	C	H	F	D	E
6	10	6	7	6	11	35	10
8	11	6	10	6	16	41	14
10	13	8	11	8	18	41	18
15	14	10	14	8	22	44	21
20	16	11	16	10	27	44	27
25	19	13	21	10	36	51	33
32	21	14	24	14	46	51	43
40	21	16	28	16	50	51	48
50	22	18	32	18	65	64	60
65	27	19	36	19	75	70	73
80	28	21	41	21	90	70	89
100	32	25	65	25	115	76	114

B&M-125



PLUG

3000 LBS. ASME B16.11
Male Solid

- Accurate Threading, male end to BSPT.
- High quality antirust oil coating.
- Superior grade forging to ensure crack free installation
- Strong, Durable and Total Safety



Applications

Water	Air	Steam	Gas	Oil
✓	✓	✓	✓	✓

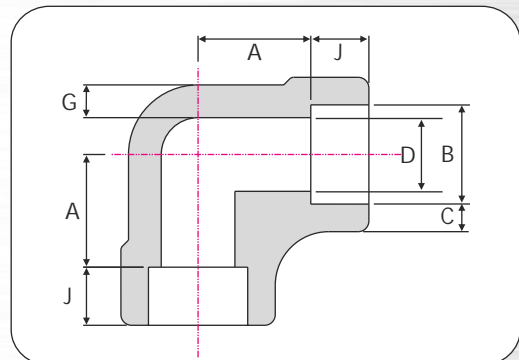
B&M-126

SOCKET WELD ELBOW

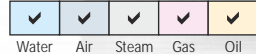
3000 LBS. 90° Female, Equal

- Full Bore, prefect right angle to 90°.
- Designed as per ASME standards.
- High quality antirust oil coating.
- Superior grade forging to ensure crack free installation

Nominal Size	A	B	C	D	J(min.)	G(min.)
6	11	11.20 10.80	3.18 3.18	7.6 6.1	9.5	2.41
8	11	14.60 14.20	3.78 3.30	10.0 8.5	9.5	3.02
10	13.5	18.00 17.60	4.01 3.50	13.3 11.8	9.5	3.20
15	15.5	22.20 21.80	4.67 4.09	16.6 15.0	9.5	3.73
20	19	27.60 27.20	4.90 4.27	21.7 20.2	12.5	3.91
25	22.5	34.30 33.90	5.69 4.98	27.4 25.9	12.5	4.55
32	27.0	43.10 42.70	6.07 5.28	35.8 34.3	12.5	4.85
40	32	49.20 48.80	6.35 5.54	41.6 40.1	12.5	5.08
50	38	61.70 61.20	6.93 6.04	53.3 51.7	16	5.54
65	41	74.40 73.90	8.76 7.67	64.2 61.2	16	7.01



Applications



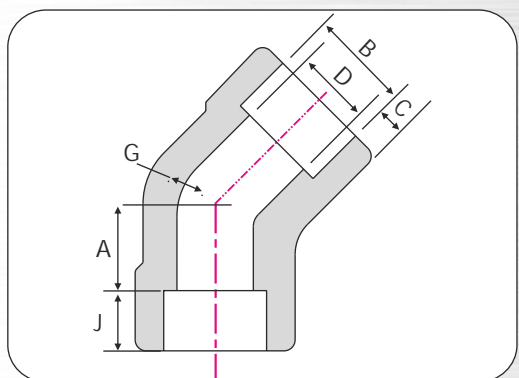
B&M-127

SOCKET WELD ELBOW

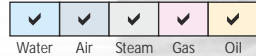
3000 LBS. 135° Female, Equal

- Full Bore, prefect angle to 135°.
- Designed as per ASME standards.
- High quality antirust oil coating.
- Superior grade forging to ensure crack free installation

Nominal Size	A	B	C	D	J(min.)	G(min.)
6	8	11.20 10.80	3.18 3.18	7.6 6.1	9.5	2.41
8	8	14.60 14.20	3.78 3.30	10.0 8.5	9.5	3.02
10	8	18.00 17.60	4.01 3.50	13.3 11.8	9.5	3.20
15	11	22.20 21.80	4.67 4.09	16.6 15.0	9.5	3.73
20	13	27.60 27.20	4.90 4.27	21.7 20.2	12.5	3.91
25	14	34.30 33.90	5.69 4.98	27.4 25.9	12.5	4.55
32	17.5	43.10 42.70	6.07 5.28	35.8 34.3	12.5	4.85
40	20.5	49.20 48.80	6.35 5.54	41.6 40.1	12.5	5.08
50	25.5	61.70 61.20	6.93 6.04	53.3 51.7	16	5.54
65	28.5	74.40 73.90	8.76 7.67	64.2 61.2	16	7.01



Applications



23

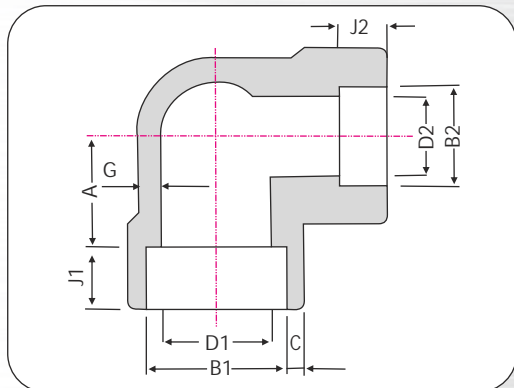
SOCKET WELD ELBOW

R. SOCKET WELD ELBOW

B&M-128

REDUCING SOCKET WELD ELBOW

3000 LBS. 90° Female, Reducing



- Full Bore, prefect right angle to 90°.
- Designed as per ASME standards.
- High quality antirust oil coating.
- Graded forging to ensure crack free installation.

Applications



Nominal Size	A	B1		B2		C	
		Min.	Max.	Min.	Max.	Min.	Max.
8x6	11	14.20	14.60	10.80	11.20	3.30	3.78
10x8	13.5	17.60	18.00	14.20	14.60	3.50	4.01
15x10	15.5	21.80	22.20	17.60	18.00	4.09	4.67
20x15	19	27.20	27.60	21.80	22.20	4.27	4.90
25x15	22.5	33.90	34.30	21.80	22.20	4.98	5.69
25x20	22.5	33.90	34.30	27.20	27.60	4.98	5.69
32x20	27	42.70	43.10	27.20	27.60	5.28	6.07
32x25	27	42.70	43.10	33.90	34.30	5.28	6.07
40x25	32	48.80	49.20	33.90	34.30	5.54	6.35
40x32	32	48.80	49.20	42.70	43.10	5.54	6.35
50x32	38	61.20	61.70	42.70	43.10	6.04	6.93
50x40	38	61.20	61.70	48.80	49.20	6.04	6.93

Nominal Size	D1		D2		G	J1	J2
	Min.	Max.	Min.	Max.	Min.	Min.	Min.
8x6	8.5	10.0	6.1	7.6	3.02	9.5	9.5
10x8	11.8	13.3	8.5	10.0	3.20	9.5	9.5
15x10	15.0	16.6	11.8	13.3	3.73	9.5	9.5
20x15	20.2	21.7	15.0	16.6	3.91	12.5	9.5
25x15	25.9	27.4	15.0	16.6	4.55	12.5	9.5
25x20	25.9	27.4	20.2	21.7	4.55	12.5	12.5
32x20	34.3	35.8	20.2	21.7	4.85	12.5	12.5
32x25	34.3	35.8	25.9	27.4	4.85	12.5	12.5
40x25	40.1	41.6	25.9	27.4	5.08	12.5	12.5
40x32	40.1	41.6	34.3	35.8	5.08	12.5	12.5
50x32	51.7	53.3	34.3	35.8	5.54	16.0	12.5
50x40	51.7	53.3	40.1	41.6	5.54	16.0	12.5

24

B&M-129

SOCKET WELD TEE

3000 LBS. 90° Female, Equal

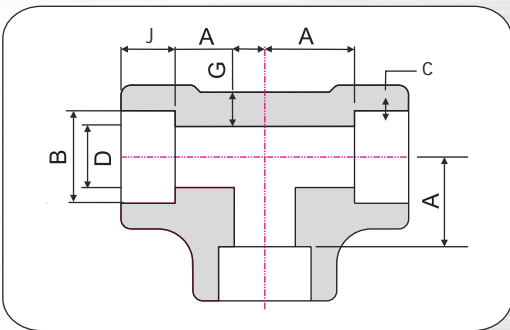
- Full Bore, perfect right angle to 90°.
- Designed as per ASME standards.
- High quality antirust oil coating.
- Superior grade forging to ensure crack free installation

Nominal Size	A	B	C	D	J(min.)	G(min.)
6	11	11.20 10.80	3.18 3.18	7.6 6.1	9.5	2.41
8	11	14.60 14.20	3.78 3.30	10.0 8.5	9.5	3.02
10	13.5	18.00 17.60	4.01 3.50	13.3 11.8	9.5	3.20
15	15.5	22.20 21.80	4.67 4.09	16.6 15.0	9.5	3.73
20	19	27.60 27.20	4.90 4.27	21.7 20.2	12.5	3.91
25	22.5	34.30 33.90	5.69 4.98	27.4 25.9	12.5	4.55
32	27.0	43.10 42.70	6.07 5.28	35.8 34.3	12.5	4.85
40	32	49.20 48.80	6.35 5.54	41.6 40.1	12.5	5.08
50	38	61.70 61.20	6.93 6.04	53.3 51.7	16	5.54
65	41	74.40 73.90	8.76 7.67	64.2 61.2	16	7.01



I.B.R
Certified

SOCKET WELD TEE



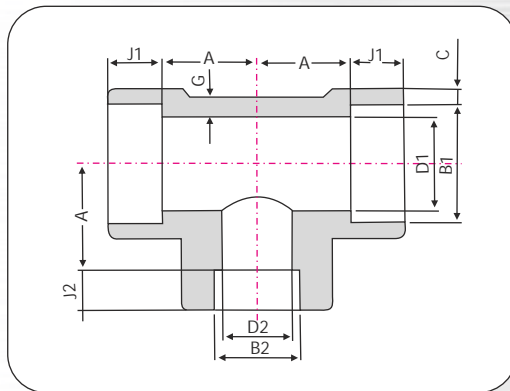
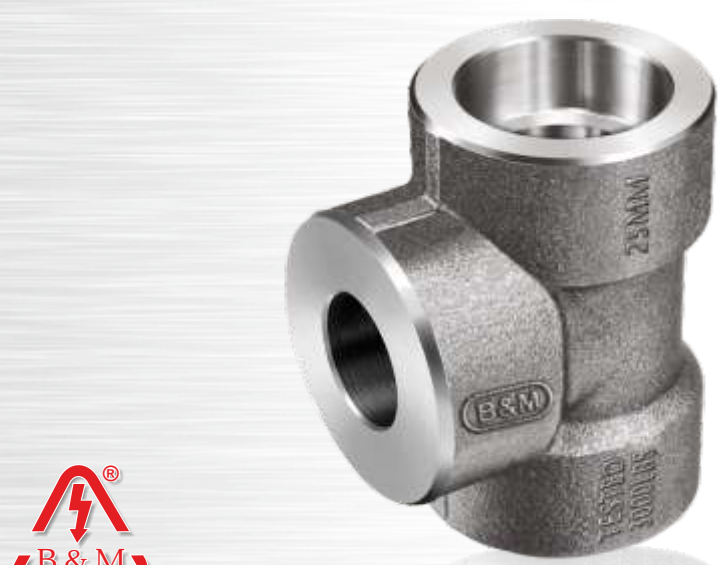
Applications



R. SOCKET WELD TEE

REDUCING SOCKET WELD TEE

3000 LBS. 90° Female, Reducing



- Full Bore, perfect right angle to 90°.
- Designed as per ASME standards.
- High quality antirust oil coating.
- Graded forging to ensure crack free installation.

Applications



I.B.R
Certified

Nominal Size	A	B1		B2		C	
		Min.	Max.	Min.	Max.	Min.	Max.
8x6	11	14.20	14.60	10.80	11.20	3.30	3.78
10x8	13.5	17.60	18.00	14.20	14.60	3.50	4.01
15x10	15.5	21.80	22.20	17.60	18.00	4.09	4.67
20x15	19	27.20	27.60	21.80	22.20	4.27	4.90
25x15	22.5	33.90	34.30	21.80	22.20	4.98	5.69
25x20	22.5	33.90	34.30	27.20	27.60	4.98	5.69
32x20	27	42.70	43.10	27.20	27.60	5.28	6.07
32x25	27	42.70	43.10	33.90	34.30	5.28	6.07
40x25	32	48.80	49.20	33.90	34.30	5.54	6.35
40x32	32	48.80	49.20	42.70	43.10	5.54	6.35
50x32	38	61.20	61.70	42.70	43.10	6.04	6.93
50x40	38	61.20	61.70	48.80	49.20	6.04	6.93

Nominal Size	D1		D2		G	J1	J2
	Min.	Max.	Min.	Max.	Min.	Min.	Min.
8x6	8.5	10.0	6.1	7.6	3.02	9.5	9.5
10x8	11.8	13.3	8.5	10.0	3.20	9.5	9.5
15x10	15.0	16.6	11.8	13.3	3.73	9.5	9.5
20x15	20.2	21.7	15.0	16.6	3.91	12.5	9.5
25x15	25.9	27.4	15.0	16.6	4.55	12.5	9.5
25x20	25.9	27.4	20.2	21.7	4.55	12.5	12.5
32x20	34.3	35.8	20.2	21.7	4.85	12.5	12.5
32x25	34.3	35.8	25.9	27.4	4.85	12.5	12.5
40x25	40.1	41.6	25.9	27.4	5.08	12.5	12.5
40x32	40.1	41.6	34.3	35.8	5.08	12.5	12.5
50x32	51.7	53.3	34.3	35.8	5.54	16	12.5
50x40	51.7	53.3	40.1	41.6	5.54	16	12.5

25

B&M-130

SOCKET WELD CROSS

3000 LBS. 180° Female, Equal

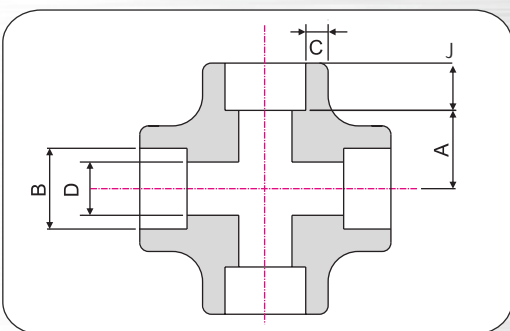
- Full Bore with precise right angle with three sided diversion.
- Superior grade forging to ensure crack free installation
- Full Bore, perfect angle to 180°.
- Designed as per ASME standards.
- High quality antirust oil coating.

Nominal Size	A	B	C	D
6	11	11.20 10.80	3.18 3.18	7.6 6.1
8	11	14.60 14.20	3.78 3.30	10.0 8.5
10	13.5	18.00 17.60	4.01 3.50	13.3 11.8
15	15.5	22.20 21.80	4.67 4.09	16.6 15.0
20	19	27.60 27.20	4.90 4.27	21.7 20.2
25	22.5	34.30 33.90	5.69 4.98	27.4 25.9
32	27.0	43.10 42.70	6.07 5.28	35.8 34.3
40	32	49.20 48.80	6.35 5.54	41.6 40.1
50	38	61.70 61.20	6.93 6.04	53.3 51.7
65	41	74.40 73.90	8.76 7.67	64.2 61.2



I.B.R
Certified

SOCKET WELD CROSS



Applications



26

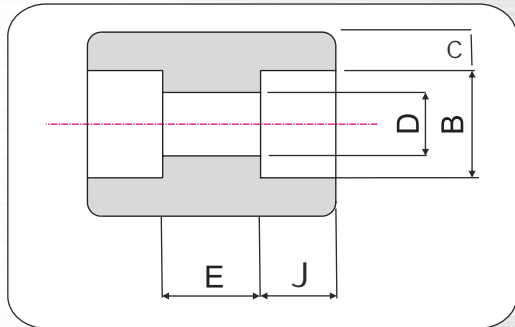
B&M-132

SOCKET WELD SOCKET

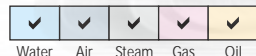
3000 LBS. 180° Female, Equal FULL COUPLING

- Full Bore, prefect right angle to 180°.
- Designed as per ASME standards.
- High quality antitrust oil coating.
- Superior grade forging to ensure crack free installation

Nominal Size	E	B	C	D	J(min.)
6	6.5	11.20 10.80	3.18 3.18	7.6 6.1	9.5
8	6.5	14.60 14.20	3.78 3.30	10.0 8.5	9.5
10	6.5	18.00 17.60	4.01 3.50	13.3 11.8	9.5
15	9.5	22.20 21.80	4.67 4.09	16.6 15.0	9.5
20	9.5	27.60 27.20	4.90 4.27	21.7 20.2	12.5
25	12.5	34.30 33.90	5.69 4.98	27.4 25.9	12.5
32	12.5	43.10 42.70	6.07 5.28	35.8 34.3	12.5
40	12.5	49.20 48.80	6.35 5.54	41.6 40.1	12.5
50	19	61.70 61.20	6.93 6.04	53.3 51.7	16
65	19	74.40 73.90	8.76 7.67	64.2 61.2	16
80	19	90.30 89.80	9.52 8.30	79.4 76.4	16
100	19	115.70 115.20	10.69 9.35	103.8 100.7	19



Applications



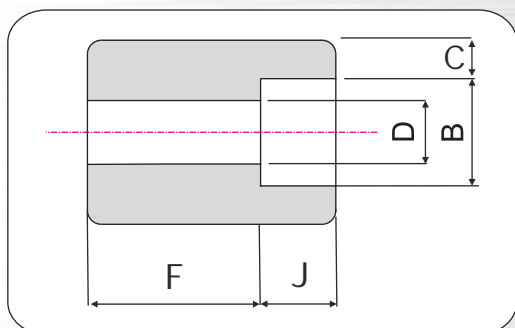
B&M-133

SOCKET WELD SOCKET

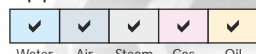
3000 LBS. 180° Female, Equal HALF COUPLING

- Full Bore, prefect right angle to 180°.
- Designed as per ASME standards.
- High quality antitrust oil coating.
- Superior grade forging to ensure crack free installation

Nominal Size	A	B	C	D	J(min.)
6	16	11.20 10.80	3.18 3.18	7.6 6.1	9.5
8	16	14.60 14.20	3.78 3.30	10.0 8.5	9.5
10	17.5	18.00 17.60	4.01 3.50	13.3 11.8	9.5
15	22.5	22.20 21.80	4.67 4.09	16.6 15.0	9.5
20	24	27.60 27.20	4.90 4.27	21.7 20.2	12.5
25	28.5	34.30 33.90	5.69 4.98	27.4 25.9	12.5
32	30	43.10 42.70	6.07 5.28	35.8 34.3	12.5
40	32	49.20 48.80	6.35 5.54	41.6 40.1	12.5
50	41	61.70 61.20	6.93 6.04	53.3 51.7	16
65	43	74.40 73.90	8.76 7.67	64.2 61.2	16
80	44.5	90.30 89.80	9.52 8.30	79.4 76.4	16
100	48	115.70 115.20	10.69 9.35	103.8 100.7	19



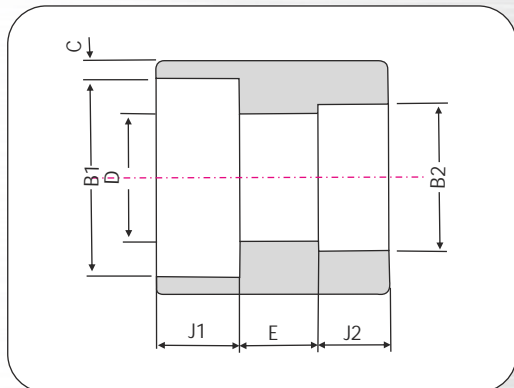
Applications



R. SOCKET WELD SOCKET

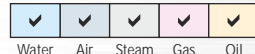
REDUCING SOCKET WELD SOCKET

3000 LBS. 180° Female, Reducing



- Full Bore, prefect right angle to 180°.
- Designed as per ASME standards.
- High quality antitrust oil coating.
- Graded forging to ensure crack free installation.

Applications



Nominal Size	B1		B2		C	
	Min.	Max.	Min.	Max.	Min.	Max.
8x6	14.20	14.60	10.80	11.20	3.30	3.78
10x8	17.60	18.00	14.20	14.60	3.50	4.01
15x10	21.80	22.20	17.60	18.00	4.09	4.67
20x15	27.20	27.60	21.80	22.20	4.27	4.90
25x15	33.90	34.30	21.80	22.20	4.98	5.69
25x20	33.90	34.30	27.20	27.60	4.98	5.69
32x20	42.70	43.10	27.20	27.60	5.28	6.07
32x25	42.70	43.10	33.90	34.30	5.28	6.07
40x25	48.80	49.20	33.90	34.30	5.54	6.35
40x32	48.80	49.20	42.70	43.10	5.54	6.35
50x32	61.20	61.70	42.70	43.10	6.04	6.93
50x40	61.20	61.70	48.80	49.20	6.04	6.93

Nominal Size	D		E	J1	J2
	Min.	Max.	Min.	Min.	Min.
8x6	6.1	7.6	6.5	9.5	9.5
10x8	8.5	10.0	6.5	9.5	9.5
15x10	11.8	13.3	6.5	9.5	9.5
20x15	15.0	16.6	9.5	12.5	9.5
25x15	15.0	16.6	9.5	12.5	9.5
25x20	20.2	21.7	12.5	12.5	12.5
32x20	20.2	21.7	12.5	12.5	12.5
32x25	25.9	27.4	12.5	12.5	12.5
40x25	25.9	27.4	12.5	12.5	12.5
40x32	34.3	35.8	12.5	12.5	12.5
50x32	34.3	35.8	19.0	16.0	12.5
50x40	40.1	41.6	19.0	16.0	12.5

B&M-135

SOCKET WELD UNION

3000 LBS. 180° Female, Equal

- Full Bore, perfect angle to 180°.
- Designed as per ASME standards.
- High quality antirust oil coating.
- Superior grade forging to ensure crack free installation

Nom. Size	A(min.)	B	C	D
8	44	16	23.5	38
10	51	18	28	45
15	58	19	33	49
20	64	22	38	60
25	75	24	45	72
32	81	26	55	76
40	86	28	61	82
50	91	34	77	103



P R E S S U R E R A T I N G

PRESSURE RATINGS

These fittings shall be designated as pressure class 1000, 3000 and 6000 fittings for threading and pressure Class 3000, & Class 6000 for socket-weld. This designation identifies the fittings with their ratings as shown as follows, Table 1.

Table 1 : Correlation of Fittings Class With Schedule Number of Wall Designation of Pipe for Calculation of Ratings

Pressure Class Designation of Fittings	Type of Fittings	Pipe Used for Rating Basic
		Schedule No.
1000 Lbs.	Threaded	40
3000 Lbs.	Threaded	40 & 80
6000 Lbs.	Threaded	160
3000 Lbs.	Socket-Weld	80
3000 Lbs.	Socket-Weld	80
3000 Lbs.	Socket-Weld	-

This table is not intended to restrict the use of pipe of thinner or thicker wall with fittings. Pipe actually used may be thinner or thicker in nominal wall than that shown in Table 1. When thinner is used its strength may govern the rating. When thicker pipe is used (e.g., for mechanical strength) the strength of the fitting governs the rating.



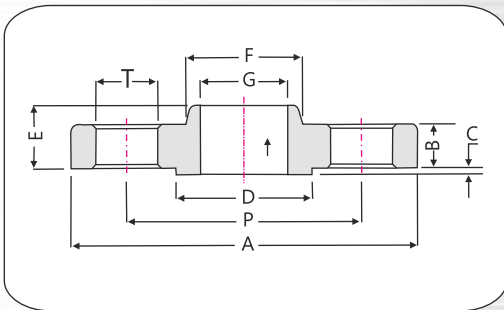
B&M-136/137



SLIP ON FLANGES
Class-150 & Class-300

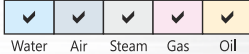


SLIP ON FLANGE



- CNC machined, VMC Drilled.
- Designed as per ASME standards.
- High quality antirust oil coating.
- Graded forging to ensure crack free installation.

Applications



N. Bore	A	B	C	D	E	F	G	P	T	Holes
15	89	11.1	1.6	35	16	30	22.4	60.3	15.9	4
20	98	12.7	1.6	43	16	38	27.7	69.8	15.9	4
25	108	14.3	1.6	51	17	49	34.5	79.4	15.9	4
32	117	15.9	1.6	64	21	59	43.2	88.9	15.9	4
40	127	17.5	1.6	73	22	65	49.5	98.4	15.9	4
50	152	19	1.6	92	25	78	62	120.6	19	4
65	178	22.2	1.6	105	29	90	74.7	139.7	19	4
80	190	23.8	1.6	127	30	108	90.7	152.4	19	4
90	216	23.8	1.6	140	32	122	103.4	177.8	19	8
100	229	23.8	1.6	157	33	135	116.1	190.5	19	8
125	254	23.8	1.6	186	37	164	143.8	215.9	22.2	8
150	279	25.4	1.6	216	40	192	170.7	241.3	22.2	8
200	343	28	1.6	270	44	246	221.5	288.4	22.2	8
250	406	30.2	1.6	324	49	305	276.4	362	25.4	12
300	483	34.8	1.6	381	56	365	327.2	431.8	25.4	12

B&M-136

Class 150

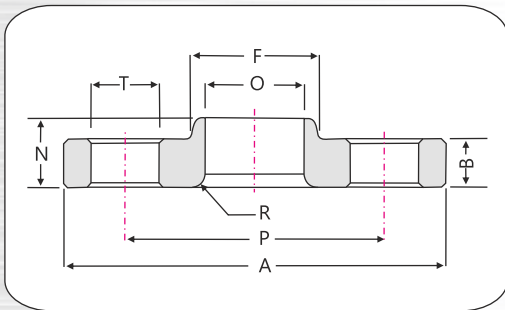
N. Bore	A	B	C	D	E	F	G	P	T	Holes
15	95	14.3	1.6	35	22	38	22.4	66.7	15.9	4
20	117	15.9	1.6	43	25	48	27.7	82.6	19	4
25	124	17.5	1.6	51	27	54	34.5	88.9	19	4
32	133	19	1.6	64	27	64	43.2	98.4	19	4
40	156	20.6	1.6	73	30	70	49.5	114.3	22.2	4
50	165	22.2	1.6	92	33	84	62	127	19	8
65	190	25.4	1.6	105	38	100	74.7	149.2	22.2	8
80	210	28.6	1.6	127	43	117	90.7	168.3	22.2	8
90	229	30.2	1.6	140	44	133	103.4	184.2	22.2	8
100	254	31.8	1.6	157	48	146	116.1	200	22.2	8
125	279	34.9	1.6	186	51	178	143.8	235	22.2	8
150	318	36.5	1.6	216	52	206	170.7	269.9	22.2	12
200	381	41.3	1.6	270	62	260	221.5	330.2	25.4	12
250	444	47.6	1.6	324	67	321	276.4	387.4	28.6	16
300	521	50.8	1.6	381	73	375	327.2	450.8	31.8	16

B&M-137

Class 300

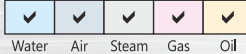
31

LAP JOINT FLANGES



- Designed as per ASME standards.
- CNC machined, VMC Drilled.
- High quality antirust oil coating.
- Graded forging to ensure crack free installation.

Applications



N. Bore	A	B	F	N	O	P	R	T	Holes
15	89	11.1	30	16	23	60.3	3	15.9	4
20	98	12.7	38	16	28	69.8	3	15.9	4
25	108	14.3	49	17	35	79.4	3	15.9	4
32	117	15.9	59	21	43.5	88.9	5	15.9	4
40	127	17.5	65	22	50	98.4	6.5	15.9	4
50	152	19	78	25	62.5	120.6	8	19	4
65	178	22.2	90	29	75.5	139.7	8	19	4
80	190	23.8	108	30	91.5	152.4	9.5	19	4
90	216	23.8	122	32	104	177.8	9.5	19	8
100	229	23.8	135	33	117	190.5	11	19	8
125	254	23.8	164	37	145	215.9	11	22.2	8
150	279	25.4	192	40	171	241.3	12.5	22.2	8
200	343	28	246	44	222	288.4	12.5	22.2	8
250	406	30.2	305	49	277	362	12.5	25.4	12
300	483	34.8	365	56	328	431.8	12.5	25.4	12

B&M-138

Class 150

N. Bore	A	B	F	N	O	P	R	T	Holes
15	95	14.3	38	22	23	66.7	3	15.9	4
20	117	15.9	48	25	28	82.6	3	19	4
25	124	17.5	54	27	35	88.9	3	19	4
32	133	19	64	27	43.5	98.4	5	19	4
40	156	20.6	70	30	50	114.3	6.5	22.2	4
50	165	22.2	84	33	62.5	127	8	19	8
65	190	25.4	100	38	75.5	149.2	8	22.2	8
80	210	28.6	117	43	91.5	168.3	9.5	22.2	8
90	229	30.2	133	44	104	184.2	9.5	22.2	8
100	254	31.8	146	48	117	200	11	22.2	8
125	279	34.9	178	51	145	235	11	22.2	8
150	318	36.5	206	52	171	269.9	12.5	22.2	12
200	381	41.3	260	62	222	330.2	12.5	25.4	12
250	444	47.6	321	95	277	387.4	12.5	28.6	16
300	521	50.8	375	102	328	450.8	12.5	31.8	16

B&M-139

Class 300

32

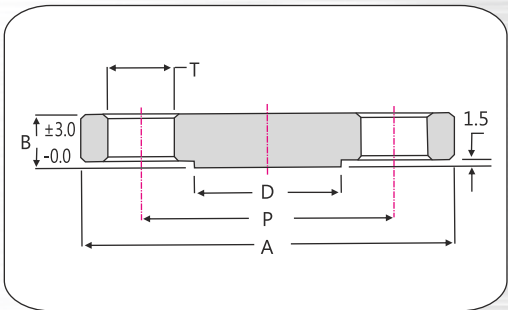
B&M-140/141



BLIND FLANGES
Class-150 & Class-300



BLIND FLANGE



- Designed as per ASME standards.
- CNC machined, VMC Drilled.
- High quality antirust oil coating.
- Graded forging to ensure crack free installation.

Applications



Nominal Bore	A	D	B	P	T	Holes
15	88.90	35.0	11.18	60.3	15.75	4
20	98.55	43.0	12.7	69.8	15.75	4
25	107.95	51.0	14.22	79.4	15.75	4
32	117.34	63.5	15.75	88.9	15.75	4
40	127.0	73.2	17.53	98.4	15.75	4
50	152.4	92.0	19.05	120.6	19.05	4
65	177.8	104.6	22.35	139.7	19.05	4
80	190.5	127.0	23.88	152.4	19.05	4
90	215.9	139.7	23.88	177.8	19.05	8
100	228.6	157.2	23.88	190.5	19.05	8
125	254.0	185.7	23.88	215.9	22.35	8
150	279.4	216.0	25.4	241.3	22.35	8
200	342.9	269.8	28.45	288.4	22.35	8
250	406.4	324.0	30.23	362.0	25.40	12
300	482.6	381.0	34.75	431.8	25.40	12

B&M-140

Class 150

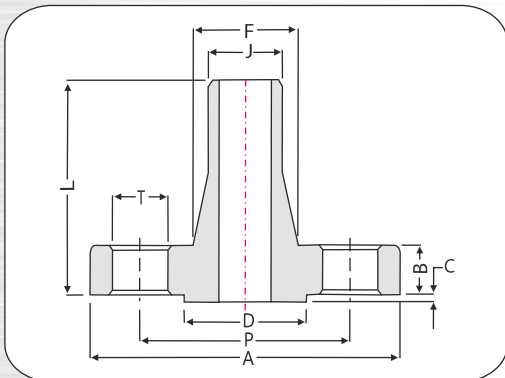
Nominal Bore	A	D	B	P	T	Holes
15	95.25	35.0	14.22	67.7	15.75	4
20	117.35	43.0	15.75	82.6	19.05	4
25	123.95	51.0	17.53	88.9	19.05	4
32	133.35	63.5	19.05	98.4	19.05	4
40	155.45	73.2	20.57	114.3	22.35	4
50	165.10	92.0	22.35	127.0	19.05	8
65	190.50	104.6	25.40	149.2	22.35	8
80	209.55	127.0	28.45	168.3	22.35	8
90	228.60	139.7	30.23	184.2	22.35	8
100	254.00	157.2	31.75	200.0	22.35	8
125	279.40	185.7	35.05	235.0	22.35	8
150	317.50	216.0	36.58	269.9	22.35	12
200	381.00	269.8	41.15	330.2	25.40	12
250	444.50	324.0	47.75	387.4	28.45	16
300	520.70	381.0	50.80	450.8	31.75	16

B&M-141

Class 300

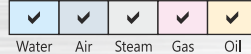
33

WELD NECK FLANGES



- CNC machined, VMC Drilled.
- Designed as per ASME standards.
- High quality antirust oil coating.
- Graded forging to ensure crack free installation.

Applications



N. Bore	A	B	C	D	F	J	L	P	T	Holes
15	89	11.1	1.6	35	30	21.3	48	60.3	15.9	4
20	98	12.7	1.6	43	38	26.7	52	69.8	15.9	4
25	108	14.3	1.6	51	49	33.4	56	79.4	15.9	4
32	117	15.9	1.6	64	59	42.2	57	88.9	15.9	4
40	127	17.5	1.6	73	65	48.3	62	98.4	15.9	4
50	152	19	1.6	92	78	60.3	64	120.6	19	4
65	178	22.2	1.6	105	90	73	70	139.7	19	4
80	190	23.8	1.6	127	108	88.9	70	152.4	19	4
90	216	23.8	1.6	140	122	101.6	71	177.8	19	8
100	229	23.8	1.6	157	135	114.3	76	190.5	19	8
125	254	23.8	1.6	186	164	141.3	89	215.9	22.2	8
150	279	25.4	1.6	216	192	168.3	89	241.3	22.2	8
200	343	28	1.6	270	246	219.1	102	288.4	22.2	8
250	406	30.2	1.6	324	305	273	102	362.0	25.4	12
300	483	34.8	1.6	381	365	323.9	114	431.8	25.4	12

B&M-142

Class 150

N. Bore	A	B	C	D	F	J	L	P	T	Holes
15	95	14.3	1.6	35	38	21.3	52	66.7	15.9	4
20	117	15.9	1.6	43	48	26.7	57	82.6	19	4
25	124	17.5	1.6	51	54	33.4	62	88.9	19	4
32	133	19	1.6	64	64	42.2	65	98.4	19	4
40	156	20.6	1.6	73	70	48.3	68	114.3	22.2	4
50	165	22.2	1.6	92	84	60.3	70	127.0	19	8
65	190	25.4	1.6	105	100	73	76	149.2	22.2	8
80	210	28.6	1.6	127	117	88.9	79	168.3	22.2	8
90	229	30.2	1.6	140	133	101.6	81	184.2	22.2	8
100	254	31.8	1.6	157	146	114.3	86	200.0	22.2	8
125	279	34.9	1.6	186	178	141.3	98	235.0	22.2	8
150	318	36.5	1.6	216	206	168.3	98	269.9	22.2	12
200	381	41.3	1.6	270	260	219.1	111	330.2	25.4	12
250	444	47.6	1.6	324	321	273	117	387.4	28.6	16
300	521	50.8	1.6	381	375	323.9	130	450.8	31.8	16

B&M-143

Class 300

34

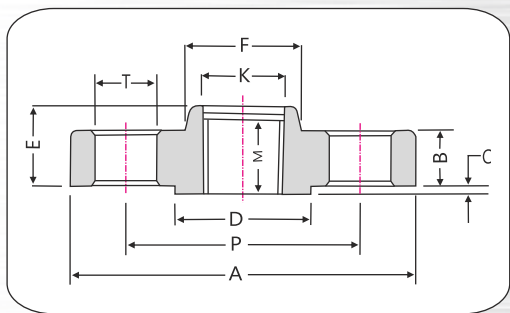
B&M-144/145



SCREWED FLANGES
Class-150 & Class-300



SCREWED FLANGES



- CNC machined VMC drilled.
- Designed as per ASME standards.
- High quality antirust oil coating.
- Graded forging to ensure crack free installation.

Applications



N. Bore	A	B	C	D	E	F	K	M	P	T	Holes
15	89	11.1	1.6	35	16	30	—	16	60.3	15.9	4
20	98	12.7	1.6	43	16	38	—	16	69.8	15.9	4
25	108	14.3	1.6	51	17	49	—	17	79.4	15.9	4
32	117	15.9	1.6	64	21	59	—	21	88.9	15.9	4
40	127	17.5	1.6	73	22	65	—	22	98.4	15.9	4
50	152	19.0	1.6	92	25	78	—	25	120.6	19	4
65	178	22.2	1.6	105	29	90	—	29	139.7	19	4
80	190	23.8	1.6	127	30	108	—	30	152.4	19	4
90	216	23.8	1.6	140	32	122	—	32	177.8	19	8
100	229	23.8	1.6	157	33	135	—	33	190.5	19	8
125	254	23.8	1.6	186	37	164	—	37	215.9	22.2	8
150	279	25.4	1.6	216	40	192	—	40	241.3	22.2	8
200	343	28.0	1.6	270	44	246	—	44	288.4	22.2	8
250	406	30.2	1.6	324	49	305	—	49	362.0	25.4	12
300	483	34.8	1.6	381	56	365	—	56	431.8	25.4	12

B&M-144

Class 150

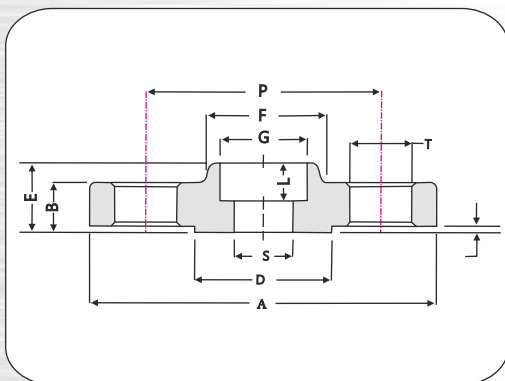
N. Bore	A	B	C	D	E	F	K	M	P	T	Holes
15	95	14.3	1.6	35	22	38	23.5	16	66.7	15.9	4
20	117	15.9	1.6	43	25	48	29	16	82.6	19	4
25	124	17.5	1.6	51	27	54	36	17	88.9	19	4
32	133	19	1.6	64	27	64	44.5	21	98.4	19	4
40	156	20.6	1.6	73	30	70	50.5	22	114.3	22.2	4
50	165	22.2	1.6	92	33	84	63.5	29	127.0	19	8
65	190	25.4	1.6	105	38	100	76	32	149.2	22.2	8
80	210	28.6	1.6	127	43	117	92	32	168.3	22.2	8
90	229	30.2	1.6	140	44	133	105	37	184.2	22.2	8
100	254	31.8	1.6	157	48	146	118	37	200.0	22.2	8
125	279	34.9	1.6	186	51	178	145	43	235.0	22.2	8
150	318	36.5	1.6	216	52	206	171	46	269.9	22.2	12
200	381	41.3	1.6	270	62	260	222	51	330.2	25.4	12
250	444	47.6	1.6	324	67	321	276	56	387.4	28.6	16
300	521	50.8	1.6	381	73	375	329	60	450.8	31.8	16

B&M-145

Class 300

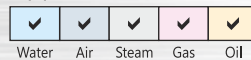
35

SOCKET WELD FLANGES



- Designed as per ASME standards.
- CNC machined VMC drilled.
- High quality antirust oil coating.
- Graded forging to ensure crack free installation.

Applications



N. Bore	A	B	D	E	F	G	L	P	S	T	Holes
15	88.9	11.2	35	15.75	30.2	22.35	9.65	60.3	15.79	15.75	4
20	98.6	12.7	43	15.75	38.1	27.69	11.18	69.8	20.93	15.75	4
25	108.0	14.2	51	17.5	49.3	34.54	12.7	79.4	26.70	15.75	4
32	117.3	15.8	63.5	20.6	59	43.18	14.22	88.9	35.0	15.75	4
40	127.0	17.5	73.2	22.4	65	49.53	15.75	98.4	40.9	15.75	4
50	152.4	19.0	92	25.4	77.7	61.98	17.53	120.6	52.5	19.1	4
65	177.8	22.4	104.6	28.5	90.4	74.68	19.05	139.7	62.7	19.1	4
80	190.5	23.9	127	30.2	108	90.68	20.57	152.4	78	19.1	4
90	216.0	23.9	139.7	31.8	122.2	103.38	22.35	177.8	90.2	19.1	8
100	228.5	23.9	157.2	33.3	134.9	116.08	23.88	190.5	102.4	19.1	8
125	254.0	23.9	185.7	36.6	163.6	143.76	23.88	215.9	128.3	22.4	8
150	279.4	25.4	216	39.6	192	170.69	26.92	241.3	154.2	22.4	8
200	343.0	28.5	269.8	44.5	246.1	221.49	31.75	288.4	202.7	22.4	8
250	406.4	30.2	324	49.3	304.8	276.35	33.27	362.0	254.5	25.4	12
300	482.6	31.8	381	55.6	365.3	327.15	39.62	431.8	304.8	25.4	12

B&M-146

Class 150

N. Bore	A	B	D	E	F	G	L	P	S	T	Holes
15	95.25	14.22	35	22.35	38.10	22.35	9.65	66.7	15.79	15.75	4
20	117.35	15.75	43	25.40	47.75	27.69	11.18	82.6	20.93	19.05	4
25	123.95	17.53	51	26.92	53.85	34.54	12.7	88.9	26.70	19.05	4
32	133.35	19.05	63.5	26.92	63.50	43.18	14.22	98.4	35.0	19.05	4
40	155.45	20.57	73.20	30.23	69.85	49.53	15.75	114.3	40.9	22.35	4
50	165.10	22.35	92	33.27	84.07	61.98	17.53	127.0	52.5	19.05	8
65	190.50	25.40	104.6	38.10	100.08	74.68	19.05	149.2	62.7	22.35	8
80	209.55	28.45	127	42.93	117.35	90.68	20.57	168.3	78	22.35	8
90	228.60	30.23	139.7	44.45	133.35	103.38	22.35	184.2	90.2	22.35	8
100	254.00	31.75	157.2	47.75	146.05	116.08	23.88	200.0	102.4	22.35	8
125	279.40	35.05	185.7	50.80	177.80	143.76	23.88	235.0	128.3	22.35	8
150	317.50	36.58	216	52.32	206.25	170.69	26.92	269.9	154.2	22.35	12
200	381.00	41.15	269.8	61.98	260.35	221.49	31.75	330.2	202.7	25.40	12
250	444.50	47.75	324	66.55	320.55	276.35	33.27	387.4	254.5	28.45	16
300	520.70	50.80	381	73.15	374.65	327.15	39.62	450.8	304.8	31.75	16

B&M-147

Class 300

36



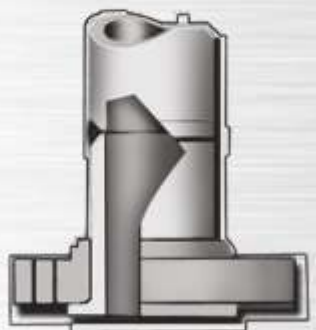
FLANGE ATTACHING METHODS

WELDING NECK FLANGES are attached by butt welding to the pipe or shell. They are preferred when radiography is required, and provide optimum stress distribution. The long tapered hub provides an important reinforcement to the flange proper from the standpoint of strength and resistance to dishing..



SLIP-ON FLANGES slide over the pipe and are attached by two fillet welds. They are preferred by many users over welding necks on account of their initially lower cost and ease of alignment. Their calculated strength under internal pressure is of the order of two-thirds that of welding neck flanges.

LAP JOINT FLANGES are also slide over the pipe and are most frequently used with Lap Joint Stud Ends. In some cases the pal is formed on the pipe end. Since they are free to rotate or swivel, there is no problem of bolt hole alignment. This type of connection is easy to maintain. The cheif use of lap joint flanges in carbon or low alloy steel piping systems is in services necessitating frequent dismantling for inspection and cleaning.



THREADED FLANGES are turned firmly onto matching pipe and are used where welding is not feasible. They are not recommended for severe cyclic service conditions. Their cheif merit lies in the fact that they can be assembled with welding, often used when alloy steel is essential for strength and where the necessary post-weld heat treatment is impractical.

SOCKET WELDING FLANGES are attached by inserting the pipe into the flange socket and applying a filet weld at the top of the hub. They are usually specified for small diameter pipe application.



1. Forged Steel Pipe Fittings for 1000 LBS (Art No.101 to 119) are usually made by Low Carbon Steel and in accordance to IS: 1239 – Part II unless until specified by the buyer.
2. Forged Steel Pipe Fittings for 3000 Lbs (Art No. 120 to 125) are made from material ASTM A105 and as per American Standard ASME B16.11-2009. Fittings of any other material as well as standard can also be manufactured on Customer's demands.
3. Forged Steel Pipe Fittings for 3000 LBS (Socket Weld Art No. 126 to 135) are usually made by Low Carbon and in accordance to IS: 4712 – 1984 unless until specified by the buyer.
4. Forged Fittings for 6000 Lbs and 9000 Lbs are also available on requirement.
5. Forged Flanges are made from material ASTM A105 and as per American Standard ASME B16.5-2009. Flanges of any other material as well as standard can also be manufactured on Customer's demands.
6. IBR Approved range is only offered with ASTM or above grades Materials.
7. Each IBR Fittings and Flanges are supplied with IBR Sr. No. marking and an IBR test certificate on FORM III C issued by Directors of Boilers, Punjab is also provided with material.
8. All fittings manufacturing with Thread Connection IS 554: 1985, BSP and B.S.P.T. Threads to N.P.T or any other standard can also be provided Customer's requirement.
9. All of our fittings range is also available with ZINC coat hot galvanized as per standard IS: 4736-1986 or Bombay Polish.
10. IS: 1239-Part II consequent from BS 1740:1965 and IS: 4712-1984 from ASME B16.11
11. All pressure depicted in LBS from its equivalent units in Kgs and vice- versa have been rounded off only for convenience.
12. In the rare event, there can be variation in standards / properties of the material used as stated, without compromising anywhere on quality and functioning of the products.
13. Owing to our ever continuous products development, dimensions & material are subject to change without any notice.

OBJECTIVE OF MANAGMENT

Production	Production must but quality First.
Quality	Always maintain high standards of quality in work place and products.
Development	Development is a journey which has No end.
Cost	Always remain competitive by world standards and maintaining production levels that achieves economies of scale.
Delivery	Always deliver goods in time with excellent planning and by cutting down production lead time.
Wealth	Customer's satisfaction is our wealth.
Safety	Provide world class, safe and riskless work environment to our employees.
Moral	Always remain our moral standards high and run business with dignity according to the rules and regulations.
Values	Customer's are our ultimate Boss

OUR ASSOCIATES

